



PRODUCTS





In our production plant sized 6000 m² in Twist, Germany, NWT GmbH operates the cutting plant NI-EZ 528 and the cold-store NI-EK 528. Our enterprise is specialised in the production of industrial meat, by-products and Baconprodukte und Convenienceprodukte. Moreover, service with regard to cold-store is offered. All logistics in-volved is handled by our sister company CT GmbH which operates its own fleet of modern refrigerated trucks.

Our business operation is driven by its quality and environmental orientation. For both NWT GmbH and CT GmbH a quality control and environmental management audit - DIN EN ISO 9001:2008 - was conducted successfully and introduced accordingly. To us, customer satisfaction - based on quality and environmental orientation - has highest priority.

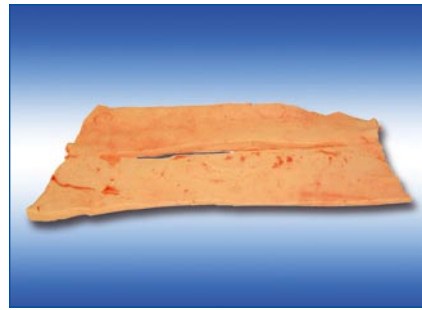
The management team - backed up by 120 employees - fully supports our high objectives. To NWT it is paramount that key management positions are held by its company owners.



Part-No. 2205

Cut pork belly, sheet ribbed, rindless

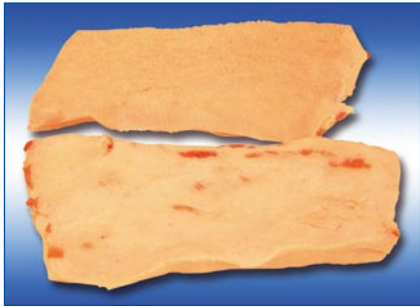
Packaging:
E2-Box, fresh. Blocks (ca. 56 x 36 x 12 cm);
10-12 layers at 5 blocks each on Euro-H1-Palet.
Stabilized by being wrapped in PE-stretch-film.



Part-No. 2502

Back fat, rindless

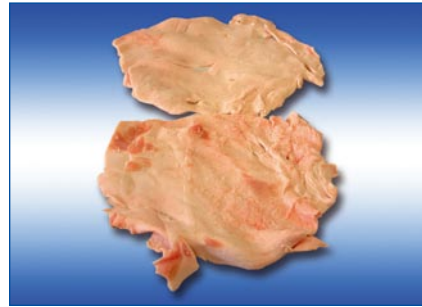
Packaging:
E2-Box, fresh. Blocks (ca. 56 x 36 x 12 cm);
10-12 layers at 5 blocks each on Euro-H1-Palet.
Stabilized by being wrapped in PE-stretch-film.



Part-No. 2501

Neck fat, rindless

Packaging:
E2-Box, fresh. Blocks (ca. 56 x 36 x 12 cm);
10-12 layers at 5 blocks each on Euro-H1-Palet.
Stabilized by being wrapped in PE-stretch-film.



Part-No. 2801

Cutting fat, rindless

Packaging:
E2-Box, fresh. Blocks (ca. 56 x 36 x 12 cm);
10-12 layers at 5 blocks each on Euro-H1-Palet.
Stabilized by being wrapped in PE-stretch-film.



Part-No. 2802

Cutting fat, 3 mm mechanical rindless

Packaging:
E2-Box, fresh. Blocks (ca. 56 x 36 x 12 cm);
10-12 layers at 5 blocks each on Euro-H1-Palet.
Stabilized by being wrapped in PE-stretch-film.



Part-No. 2506

Jowl, rindless

Packaging:
E2-Box, fresh. Blocks (ca. 56 x 36 x 12 cm);
10-12 layers at 5 blocks each on Euro-H1-Palet.
Stabilized by being wrapped in PE-stretch-film.



Part-No. 2807

Trimming 70/30

Packaging:
E2-Box, fresh. Blocks (ca. 56 x 36 x 12 cm);
10-12 layers at 5 blocks each on Euro-H1-Palet.
Stabilized by being wrapped in PE-stretch-film.



Part-No. 2805

MDM meat 1mm

Packaging:
Blocks (ca. 56 x 36 x 12 cm);
10-12 layers at 5 blocks each on Euro-H1-Palet.
Stabilized by being wrapped in PE-stretch-film.



Part-No. 2804

MDM meat 3 mm

Packaging:
Blocks (ca. 56 x 36 x 12 cm);
10-12 layers at 5 blocks each on Euro-H1-Palet.
Stabilized by being wrapped in PE-stretch-film.



Part-No. 2604

Kidneys

Packaging:
Card-board-boxes (ca. 39 x 30 x 14 cm);
averaged to 10 kg. Blocks (ca. 56 x 36 x 12 cm);
10-12 layers at 5 blocks each on Euro-H1-Palet.
Stabilized by being wrapped in PE-stretch-film.



Part-No. 2602

Pork hearts

Packaging:
Card-board-boxes (ca. 39 x 30 x 14 cm);
averaged to 10 kg. Blocks (ca. 56 x 36 x 12 cm);
10-12 layers at 5 blocks each on Euro-H1-Palet.
Stabilized by being wrapped in PE-stretch-film.



Part-No. 2605

Tongue - swiss cut

Packaging:
Card-board-boxes (ca. 39 x 30 x 14 cm);
averaged to 10 kg. Blocks (ca. 56 x 36 x 12 cm);
10-12 layers at 5 blocks each on Euro-H1-Palet.
Stabilized by being wrapped in PE-stretch-film.



Part-No. 2603

Pork liver

Packaging:
Card-board-boxes (ca. 39 x 30 x 14 cm);
averaged to 10 kg. Blocks (ca. 56 x 36 x 12 cm);
10-12 layers at 5 blocks each on Euro-H1-Palet.
Stabilized by being wrapped in PE-stretch-film.



Part-No. 2811

Mixed rind

Packaging:
Blocks (ca. 56 x 36 x 12 cm);
10-12 layers at 5 blocks each on Euro-H1-Palet.
Stabilized by being wrapped in PE-stretch-film.



Part-No. 2810

Pork Backrinds cooked and minced 1,5 mm

Packaging:
Blocks (ca. 56 x 36 x 12 cm);
10-12 layers at 5 blocks each on Euro-H1-Palet.
Stabilized by being wrapped in PE-stretch-film.



Part-No. 2853

Pork Minced rinds

Packaging:
Blocks (ca. 56 x 36 x 12 cm);
10-12 layers at 5 blocks each on Euro-H1-Palet.
Stabilized by being wrapped in PE-stretch-film.



Part-No. 2882

Pork heads

Packaging:
Blocks (ca. 56 x 36 x 12 cm);
10-12 layers at 5 blocks each on Euro-H1-Palet.
Stabilized by being wrapped in PE-stretch-film.



Part-No. 2837

Pork-ears - without external ear, without earmark

Packaging:
Card-board-boxes (ca. 39 x 30 x 14 cm);
averaged to 10 kg.



Part-No. 2610

Tails & Tailbones

Packaging:
Card-board-boxes (ca. 39 x 30 x 14 cm);
averaged to 10 kg.



Part-No. 2610

Pork Tail (short cut)

Packaging:
Card-board-boxes (ca. 39 x 30 x 14 cm);
averaged to 10 kg.



Part-No. 2206

Spare ribs

Packaging:
Card-board-boxes (ca. 39 x 30 x 14 cm);
averaged to 10 kg.
Separated by intermediate layers for easy picking.



Part-No. 2411

Loin ribs

Packaging:
Card-board-boxes (ca. 39 x 30 x 14 cm);
averaged to 10 kg.
Separated by intermediate layers for easy picking.



Part-No. 2822

Riblets

Packaging:
Card-board-boxes (ca. 39 x 30 x 14 cm);
averaged to 10 kg.



Part-No. 2834

Pork Breastbones

Packaging:
Card-board-boxes (ca. 39 x 30 x 14 cm);
averaged to 10 kg.



Part-No. 2815

Front feet

Packaging:
Card-board-boxes (ca. 39 x 30 x 14 cm);
averaged to 10 kg.



Part-No. 2832

Front feet without toes - „Ballerinas“

Packaging:
Card-board-boxes (ca. 39 x 30 x 14 cm);
averaged to 10 kg.



Part-No. 2816

Hind feet

Packaging:
Card-board-boxes (ca. 39 x 30 x 14 cm);
averaged to 10 kg.



Part-No. 2875

Hind feet without toes

Packaging:
Card-board-boxes (ca. 39 x 30 x 14 cm);
averaged to 10 kg.



Part-No. 2848

Neckbones

Packaging:
Card-board-boxes (ca. 60 x 40 x 14 cm);
averaged to 15 kg.



Part-No. 2887

Loinbones

Packaging:
Card-board-boxes (ca. 60 x 40 x 14 cm);
averaged to 15 kg.



Part-No. 2888

Pork Femur Bones

Packaging:
Card-board-boxes (ca. 60 x 40 x 14 cm);
averaged to 15 kg.



Kontakt

NWT GmbH

Industriestraße 19
D-49767 Twist
Telefon: + 49 (0) 59 36 / 93 20-0
Telefax: + 49 (0) 59 36 / 90 40 80
www.nwt-twist.de
nwt-twist@t-online.de

Geschäftsführung:

Herr Marcel Droste
Telefon: + 49 (0) 59 36 / 9 23 77-99
Telefax: + 49 (0) 59 36 / 9 23 77-41
Mobil: + 49 (0) 1 51 / 1849 3200
E-mail: marcel.droste@nwt-twist.de

Betriebsleitung:

Herr Dipl.-Ing. Norbert Oellermann
Telefon: + 49 (0) 59 36 / 93 20-17
Telefax: + 49 (0) 59 36 / 90 40 80
E-mail: nwt-twist@t-online.de



TWISTER SPEZIALITÄTEN

Herr Peter Schreiner
Key Account Manager
Industriestraße 19
D-49767 Twist
Telefon: ++ 49 (0) 59 36 / 9 23 77 57
Telefax: ++ 49 (0) 59 36 / 9 23 77 56
twister-spezialitaeten@email.de

Leitung Kommerzieller Bereich

Herr Patrick Reesink
Telefon: + 49 (0) 59 36 / 93 20-26
Telefax: + 49 (0) 59 36 / 93 20-16
Mobil: + 49 (0) 171 / 7803 729

Einkauf Rohstoffe:

Herr Theo Kremer
Telefon: + 49 (0) 59 36 / 93 20-13
Telefax: + 49 (0) 59 36 / 93 20-16
Mobil: +49 (0) 170 / 7793 277
E-mail: nwt-twist@t-online.de

Einkauf Hilfs- und Betriebsstoffe:

Herr Gert-Jan Kuiper
Telefon: +49 (0) 59 36 / 9 23 77-82
Telefax: +49 (0) 59 36 / 9 23 77-84
E-mail: verkauf@birkholzer.de

Qualitätsmanagement:

Herr Torsten Otterbach
Telefon: +49 (0) 59 36 / 9 23 77-83
Telefax: +49 (0) 59 36 / 9 23 77-59
E-mail: verkauf@birkholzer.de



CT GmbH - Internationale Kühltransporte

Industriestraße 19
D-49767 Twist
Telefon: ++ 49 (0) 59 36 / 9 23 77 29
Telefax: ++ 49 (0) 59 36 / 9 23 77 30
Internet: www.ct-twist.de
E-Mail: info@ct-twist.de

Geschäftsführer:

Marcel Droste